



The *Great* Canadian
Catholic Hospital History Project

Documenting the legacy and contribution of the
Congregations of Religious Women in Canada,
their mission in health care, and the founding and operation of Catholic hospitals.



Projet de la *Grande* Histoire
des hôpitaux catholiques au Canada

Retracer l'héritage et la contribution des
congrégations de religieuses au Canada,
leur mission en matière de soins de santé ainsi que la fondation et l'exploitation des hôpitaux catholiques.

**Our Lady of Mercy Hospital
Toronto, Ontario**

from the
Journal of the Royal Architectural Institute of Canada
Vol. 17, Toronto October 1940, No. 10

Source: Archives of the Sisters of
St. Joseph of Toronto

Copyright: Public Domain

JOURNAL

ROYAL ARCHITECTURAL
INSTITUTE OF CANADA



VOL. 17

TORONTO, OCTOBER, 1940

NO. 10



OUR Lady of Mercy Hospital is a home for incurable patients. The average stay is counted in years and a large proportion of them are dependent. The patients are of all ages, but most of them are old people. As a rule, they require care but not treatment. Most of them are ward patients, although a few private and semi-private rooms are available. About forty per cent. are wheel chair patients, a few are able to walk and the others are unable to leave their beds. Provision is made for the temporary care of infectious cases which may develop.

There are twenty-two six-bed wards and six twelve-bed wards, there being 275 beds in all. There is a sun-room connected with each twelve-bed ward and another for every group of six six-bed wards, there being three sun-rooms on each floor. An auditorium is provided for concerts and for motion pictures which is also used for physio-therapy. Utility rooms comparable to those of a General Hospital are provided, but there are no operating rooms or special treatment facilities, with the exception of a dental operating room. Food is distributed direct from the serving pantry in the basement by means of one of the two elevators.

The structure of the building, designed by Mr. E. H. Darling, is of reinforced concrete and the general contractors were the Pigott Construction Company. Mr. H. H. Angus was the mechanical engineer. The exterior walls are red brick with stone trim. Over the entrance portico is a sculptured group by Miss Jacobine Jones, Sculptor. The double-hung windows are wood with interlocking aluminum weather-stripping and spiral sash balances. Floors are, generally speaking, linoleum. Extended bases and other means of protection are used so that furniture or wheel chairs cannot scratch or mar the walls or doors. Corridors are treated with acoustic ceilings. All lighting fixtures were especially designed for their purpose and are chromium plated.

The Chapel ceiling has exposed concrete beams decorated in full colour. The woodwork is oak with walnut trim and walnut inlay. All the woodwork, including pews and altar, was designed by the Architects, together with the bronze candlesticks and sanctuary lamps. The stained glass windows are from the studio of Yvonne Williams and Esther Johnson. While the building is for the benefit of those who are able to contribute little for their own maintenance, in order to minimize upkeep and depreciation, the best materials and equipment were used throughout.

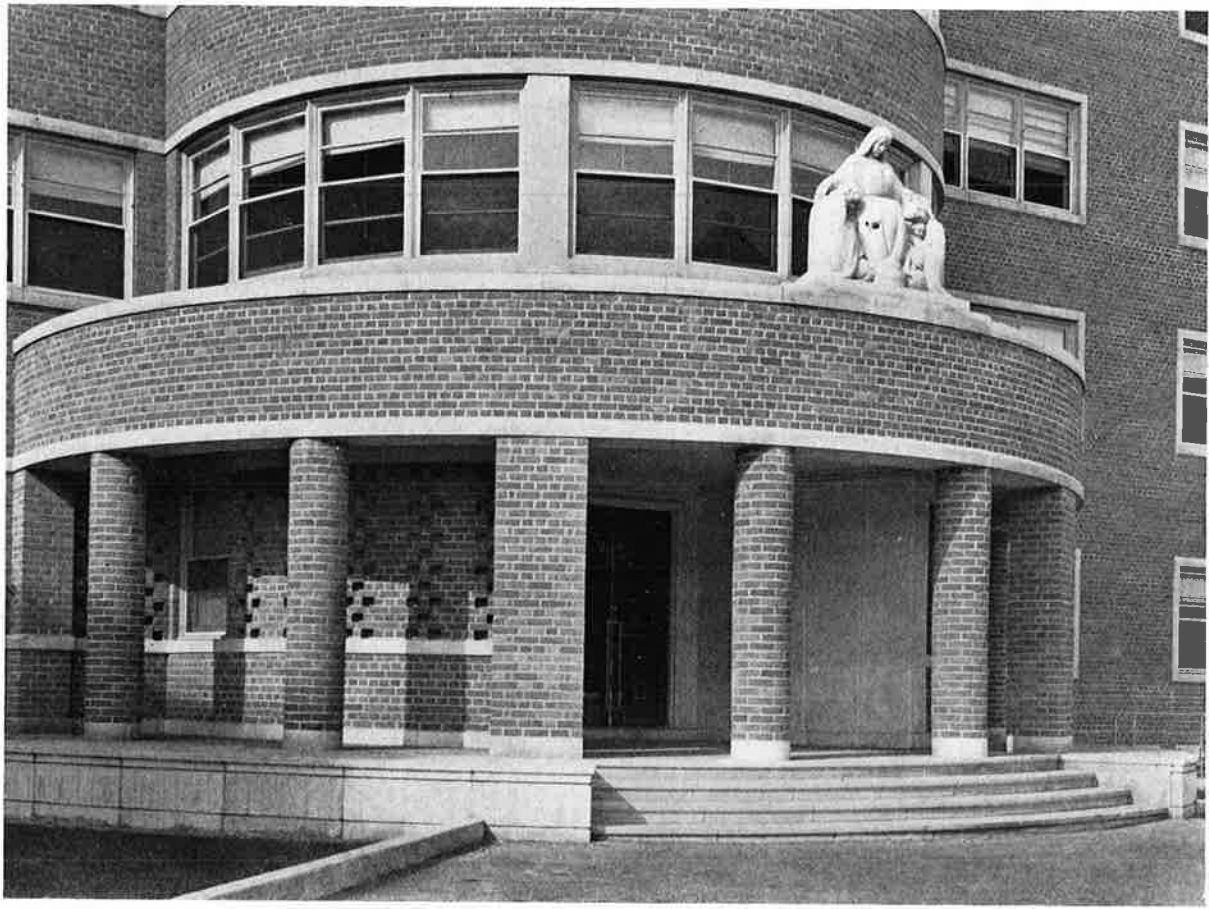
R. SCHOFIELD MORRIS.



OUR LADY OF MERCY HOSPITAL, TORONTO, ONTARIO
MARANI, LAWSON AND MORRIS, ARCHITECTS



EAST FRONT



ENTRANCE PORCH



CHAPEL WING

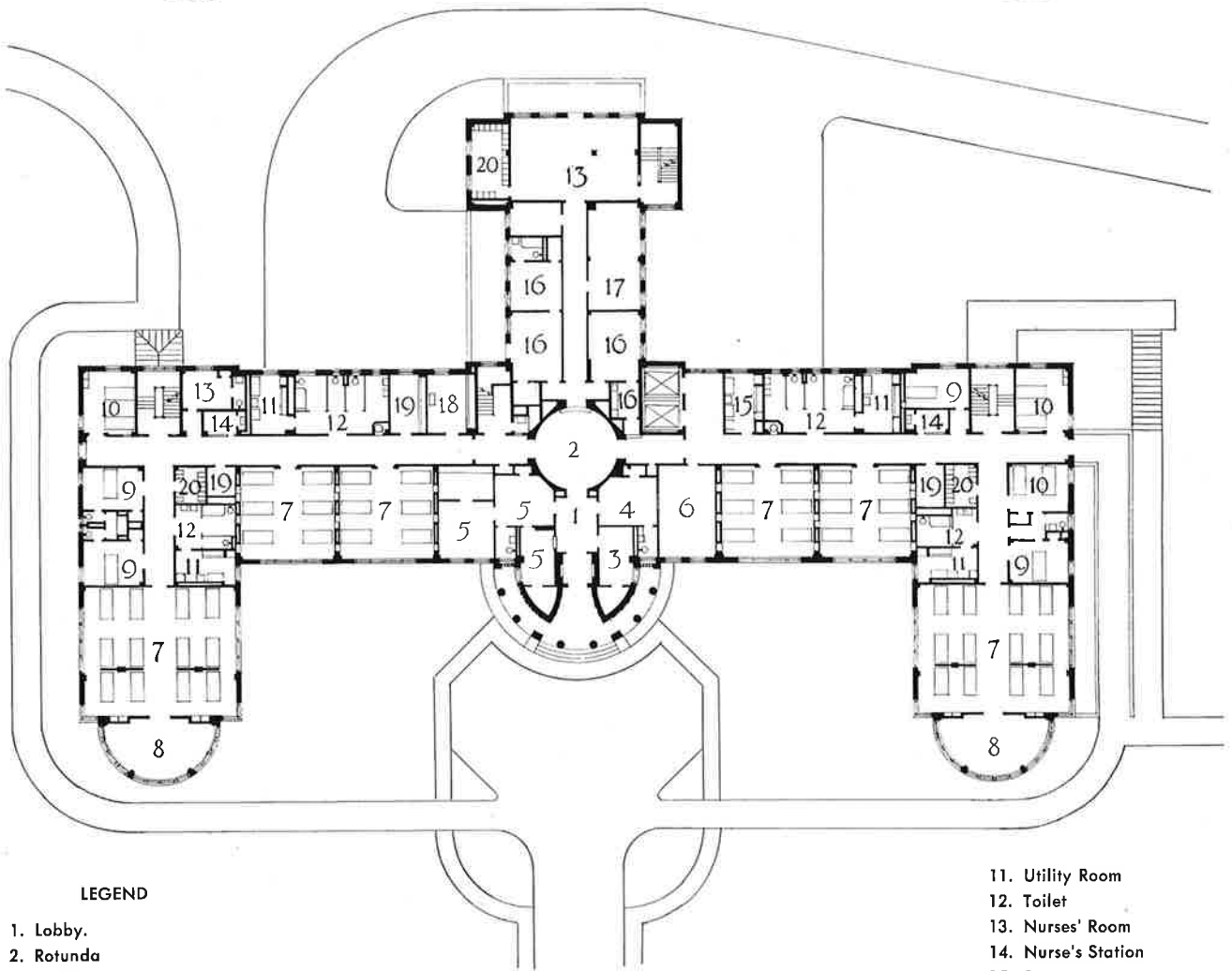
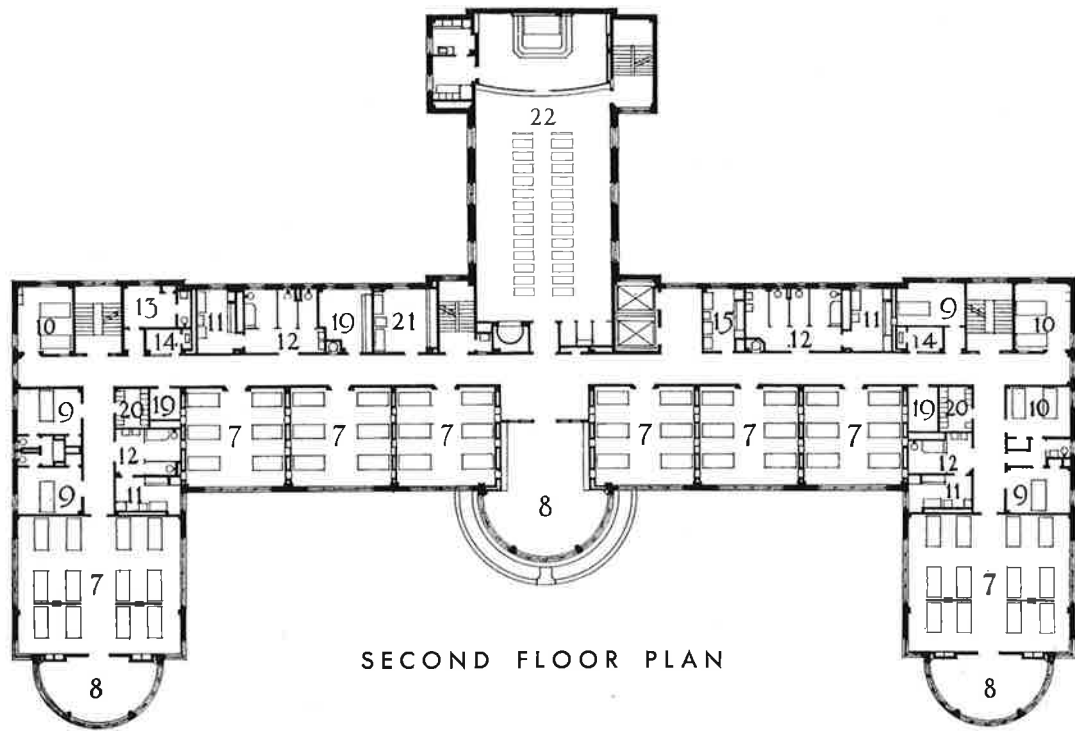


CHAPEL INTERIOR



ENTRANCE PORCH DETAIL

Photos, T. G. Jay.

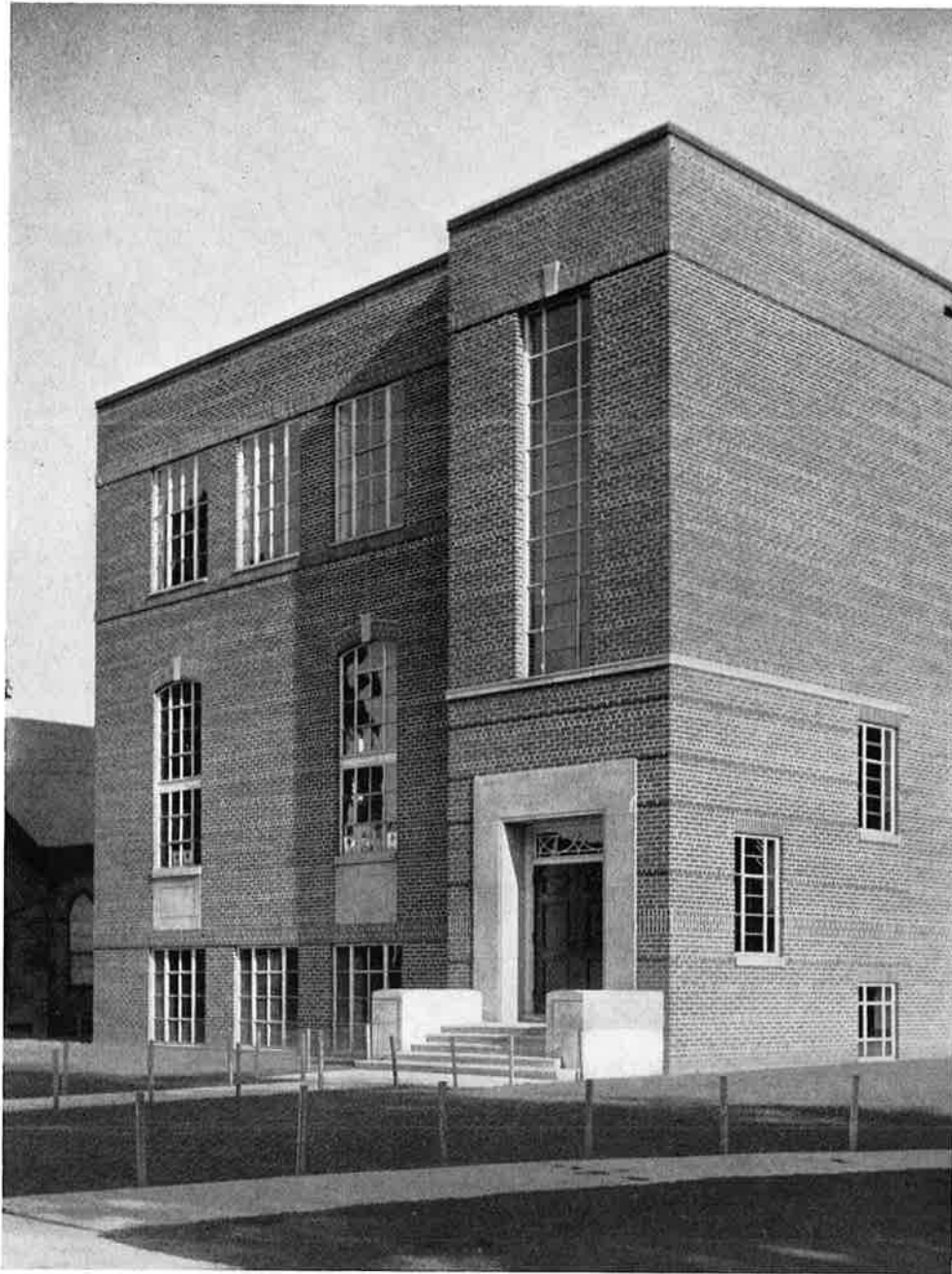


LEGEND

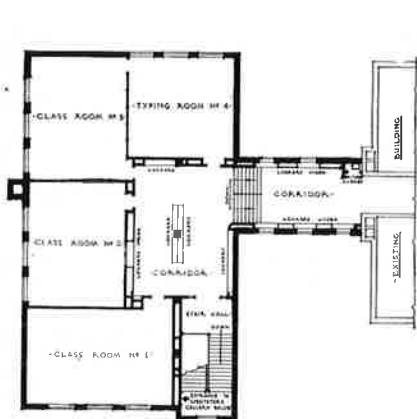
- 1. Lobby.
- 2. Rotunda
- 3. Mother Superior's Office
- 4. Doctors' Room
- 5. Offices
- 6. Reception Room
- 7. Ward
- 8. Solarium
- 9. Private Room
- 10. Semi-Private Room

- 11. Utility Room
- 12. Toilet
- 13. Nurses' Room
- 14. Nurse's Station
- 15. Servery
- 16. Priest's Living Quarters
- 17. Maids' Room
- 18. Pharmacy
- 19. Linen
- 20. Lockers
- 21. Central Supply Room
- 22. Chapel

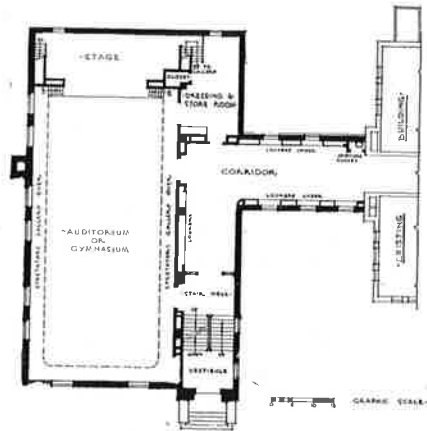
OUR LADY OF MERCY HOSPITAL
TORONTO, ONTARIO



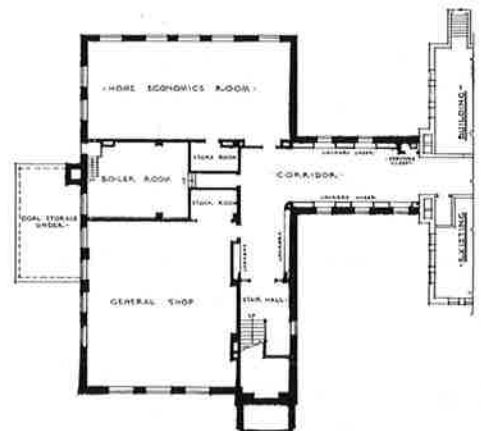
ADDITION TO THE COLLEGIATE INSTITUTE, COBOURG, ONTARIO
S. B. COON AND SON, ARCHITECTS



THIRD FLOOR PLAN



SECOND FLOOR PLAN



FIRST FLOOR PLAN